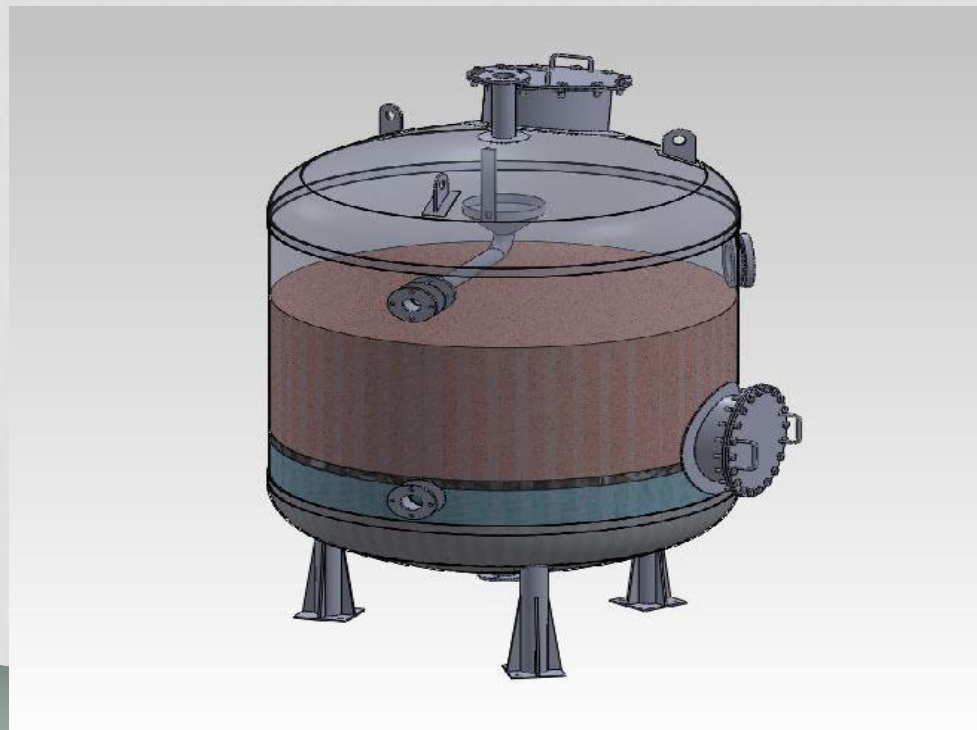


SPUDWEB

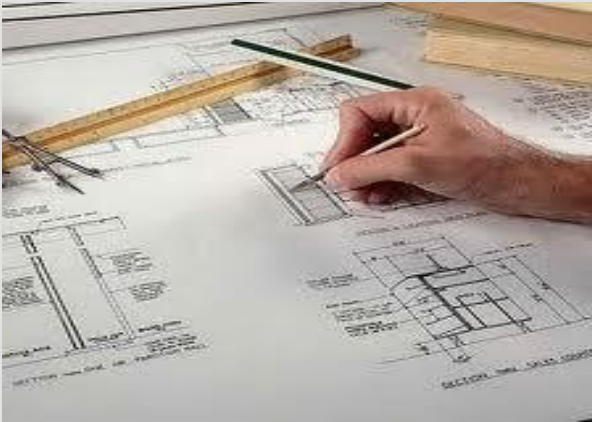
SPUDWEB TECHNOLOGIES PVT LTD



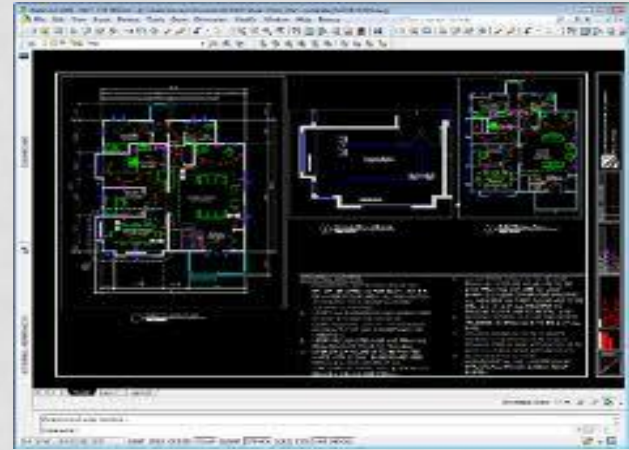
Filters & Softeners - Simplified

SPUSSELS

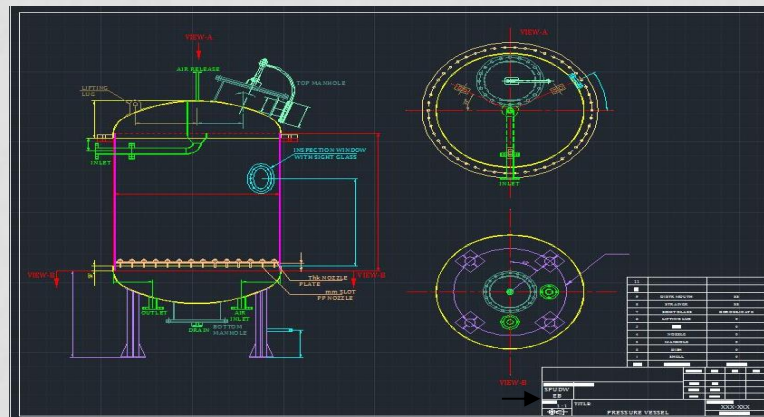
T
I
M
E



DRAWING – DAYS



CAD – HRS

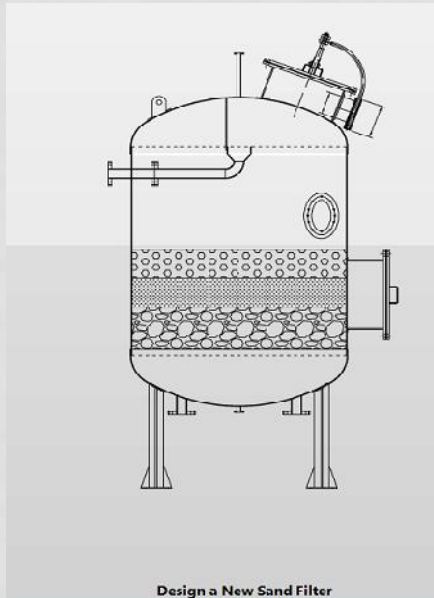


SPUDWEB DESIGN SOFTWARE - MINUTES

SPUSSELS — DESIGN SOFTWARE

PRESENT SCENARIO for Pressure Vessel – Water Filter

- Design takes 10 to 30 minutes.
- Arriving at Bill of Material (BOM) takes 30 TO 45 minutes.
- 2D Part Drawing takes 4 to 6 hours.
- Design to Drawing typically takes 7 to 8 hours.



SCENARIO with SPUSSELS, Pressure Vessel – Water Filter

- Design takes less than 1 minute.
- Interactive screens for ease of design.
- Bill of Material (BOM) and Costing of the vessel within 1 minute
- 2D Part Drawing generate within 2 minute.
- Design to Drawing done within 5 minute.

SAVING PRECIOUS TIME
HOURS TO MINUTES

SPUSSELS — INPUT SHEET

Basic Inputs

Units: Kg/Cm³ MMKS IPS

Drawing Information

Drawing Number	<input type="text"/>
Date	15-Feb-2013
Drawn For Client Name	<input type="text"/>
Client Ref. No	<input type="text"/>
Title	<input type="text"/>
Drawn By	<input type="text"/>
Checked By	<input type="text"/>
Approved By	<input type="text"/>
Notes	<input type="text"/>

Drawing No and other details shall form the Name Block on the CAD Drawing

Client Name, Logo, Ref No input, Drawn By, Checked By, Approved by all details on Input reproduces automatically on to the final drawing name plate.

Navigating Button

Messages

SPUSSELS — DESIGN SHEET

Design Values

Design Parameters	
Flow Rate	15 m ³ /hr
Flow Velocity	15 m/hr
Rubber Lining Available?	Not Available
Vessel Construction	
Vessel Material	A240 304/SS 304
Design Temperature	21 °C
Operating Temperature	20 °C
Design Pressure (DP)	4 Kg/Sqcm
Operating Pressure (OP)	4 Kg/Sqcm
Allowable Stress In Design Temperature	1406 Kg/Sqcm
Allowable Stress In Operating Temperature	1406 Kg/Sqcm
Density Of Vessel Material	8030 Kg/m ³
Corrosion Allowance (C)	0
Radiography	1

Filter Details	
Type Of Filter	PSF
Height On Straight	1500 mm
Pebbles 2"X1.5" Height	50 mm
Pebbles 1.5"X1" Height	50 mm
Pebbles 1"X3/4" Height	50 mm
Pebbles 3/4"X3/2" Height	50 mm
Pebbles Total Height	200 mm
Gravel Height	50 mm
Cylex Height	0 mm
Mixed Sand	750 mm
Carbon	0 mm
Type Of Filter Plate	Header/Lateral
Shell Details	
Shell Inside Diameter (Di)	1.12 m
Rounded Off Shell Dia	1100 mm
Calculated Minimum Shell Thickness (Tc)	2.25 mm
Required Minimum Shell Thickness	2.25 mm
Standard Minimum Shell Thickness	5 mm
Joint Efficiency (Shell) (J)	0.7

Input Values for Design i.e. Flow rate, Flow Velocity, Temperature, Pressure, Corrosion allowance.

On selection of the filter type the pebbles, sand, carbon generates automatically. The same can be edited for custom values also.

1:1 Drawing generated

Allowable Stress, Density of material displayed automatically on selection of the vessel material.

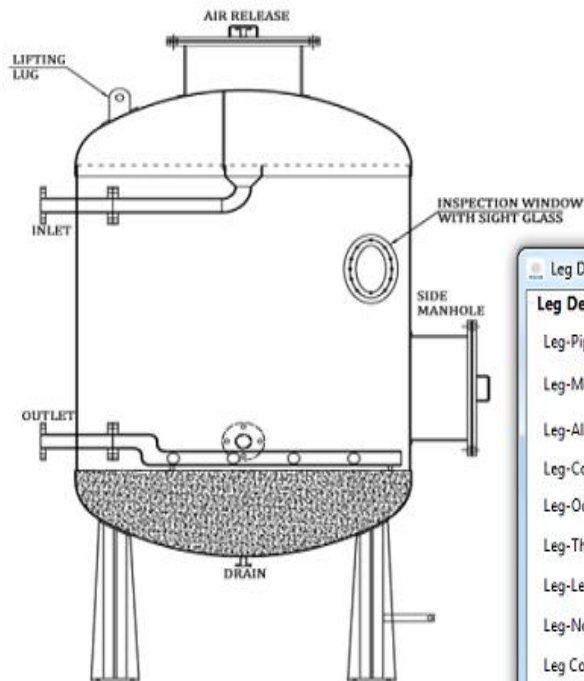
Shell Diameter, Shell Thickness calculated as per ASME standards automatically based on Input parameters.

Messages

SPUSSELS — GA SHEET

Hardware Options

Allows individual component design



Bill Of Materials					
No.	Description	Material	Qty.	Weight	Modify
00	Dish	A240 304/S...	1	61.1807422...	Modify
01	Legs	A240 304/S...	3	-	Modify
02	FilterPlate	-	1	-	Modify
03	ManHole	-	1	-	Modify
04	Nozzle	-	5	-	Modify
05	InletDistributio...	-	1	-	Modify
06	SightGlass	-	1	-	Modify
07	EarthCleat	-	1	-	Modify
08	LiftLug	-	3	-	Modify

Validates for unsafe design parameters

Leg Details

Leg-Pipe Material	A240 304/SS 304
Leg-Modulus Of Elasticity	1982568.1214 Kg/sqcm
Leg-Allowable Stress	1406 Kg/sqcm
Leg-Compressive Strength	2109 Kg/sqcm
Leg-Od	100 mm
Leg-Thick Of Pipe	5 mm
Leg-Length Of Pipe	749.972038830734 mm
Leg-No.Of Legs	Three
Leg Construction Allowable Criteria	UNSAFE
Leg-Weld Leg Size	25 mm
Leg-Weld Length	314.159265358979 mm
Leg Welding Allowable Criteria	SAFE

Leg - Rib Type	Full
Leg-Rib Height	599.972038830734 mm
Leg-Rib Thick	10 mm

Leg-Base Plate Width	200 mm
Leg-Base Plate Thick	10 mm
Leg-Base Hole Dia	18 mm
Leg-Base Hole Dist	70 mm

Finish Cancel

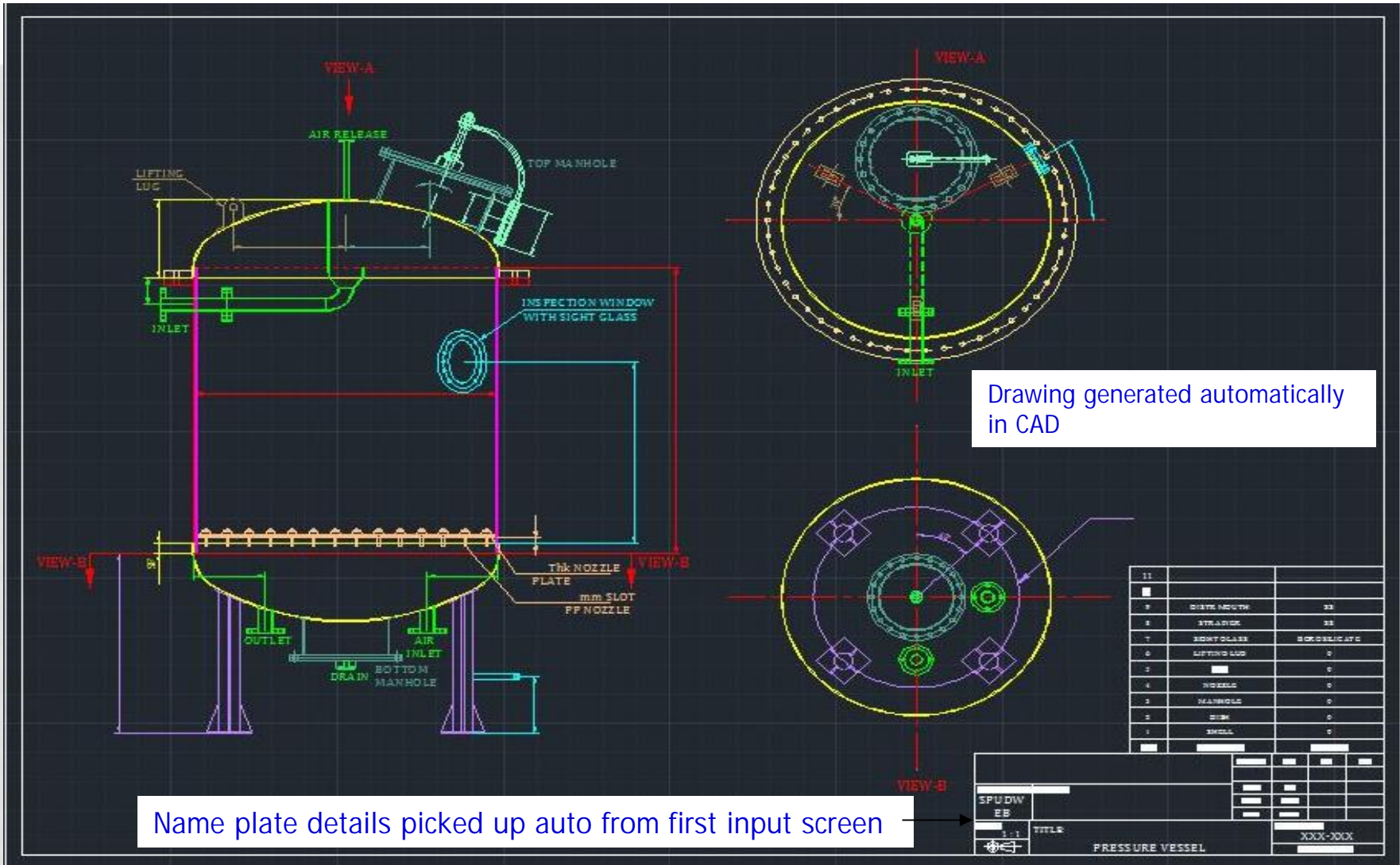
SPULLOWS
V2.0



© 2012 Spudweb Technologies Pvt. Ltd. All Rights Reserved.



SPUSSELS — GA OUTPUT



SPUSSELS — BENEFITS

- Design to Drawing in less than 5 minutes.
 - Precious time saved more than 6 man-hours per drawing.
 - Increases productivity complimenting project completion in time.
 - Helps in costing of pressure vessel to detail.
 - Stress calculation available for validation.
-
- Software architecture developed on robust platform.
 - Being used in Design of Metallic Bellows.
 - Software can be customized for pressure vessels, storage tanks and others, following a set of formulas and standards.

CONTACT



Bhaskar Krishnamurthy – 95434 06438

Chekitha Hombali – 98449 07717

SPUDWEB Technologies Private Limited
43/18, Ground Floor, Gandhi Nagar
3rd Main Road, Adyar,
Chennai - 600 020 TN, INDIA

Tel: +91 44 4266-6364 / +18324263640

Email: info@spudweb.co.in

www.spudweb.co.in